



WELLVALVE

**SCV90-H44X90
FLANGED SWING CHECK VALVE**

APPLICATION

The Flanged flap check valve is suitable for non-loaded fluid transfer applications under regular non-pulsating conditions.

Area of use : industry, waste water treatment.

GENERAL CHARACTERISTICS

Range: from DN40 to DN600.

Design according to EN 16767.

Direction of installation indicated by an arrow on the body.

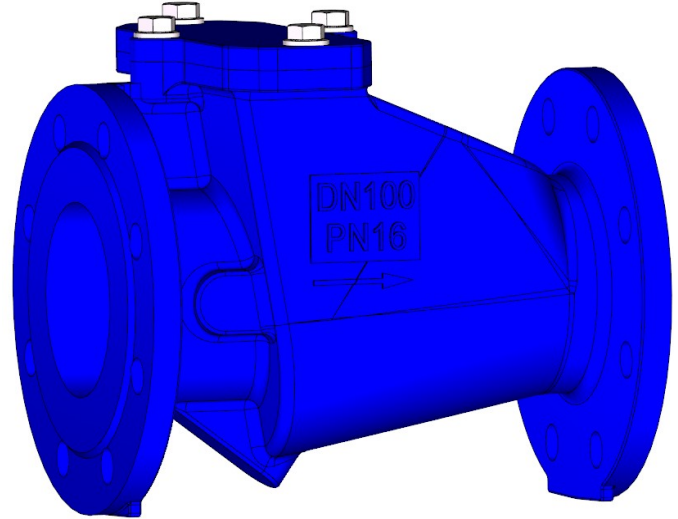
Does not require counterweight

Ensures the passage of fluid in one direction and closes as soon as the direction is reversed.

Rustproof stainless steel bolting

Mounting on horizontal or vertical ascending piping.

Drain and plug evacuation of impurities, allows partial opening of the disc if necessary when the return pressure is greater than the opening pressure. Mounting in horizontal or vertical ascending position.



STANDARDS

| | |
|---------------------|--|
| Design | According to EN16767 |
| Face to face | Face to face dimension according to NF EN 558-1 serie 48, DIN3202/1 serie F6 |
| Connection* | Mounting flange in accordance with EN1092-2 : ISO PN10 and ISO PN16 |
| Tests | Pressure test according to standards EN12266-1, DIN 3230 and ISO 5208: Body: 24 bar Seat: 17.6 bar |

WELLVALVE China

Add: Taiping Industrial Zone, Lianyungang City, China Tel: +86 518 8520 2345 Email: wellvalve@wellvalve.com

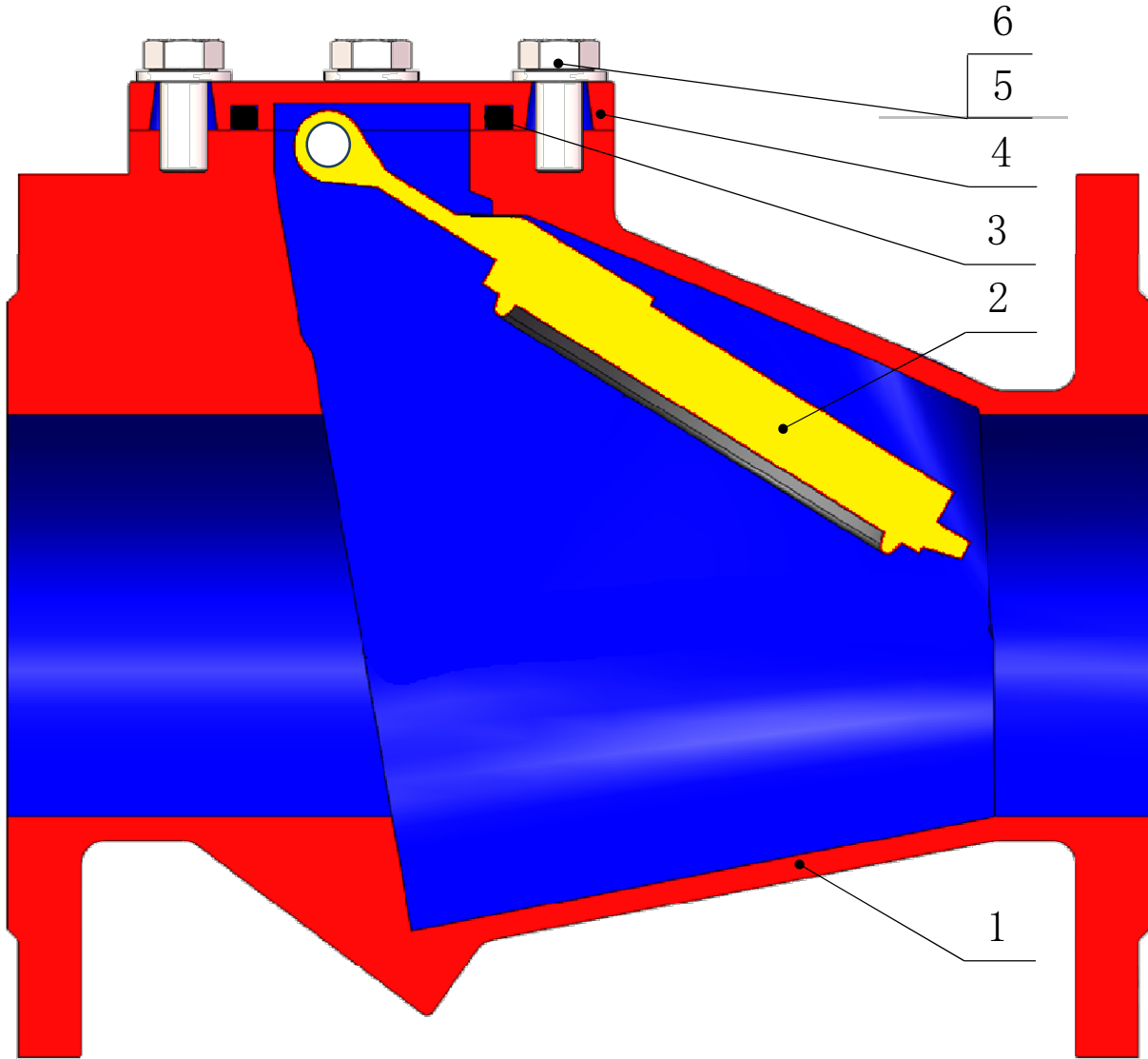
www.wellvalve.com



WELLVALVE

**SCV90-H44X90
FLANGED SWING CHECK VALVE**

| Component | Coating |
|-----------|------------------------------------|
| Body(1) | Epoxy powder RAL5005 250microns |
| Bonnet | Epoxy liquid RAL5005 250microns |

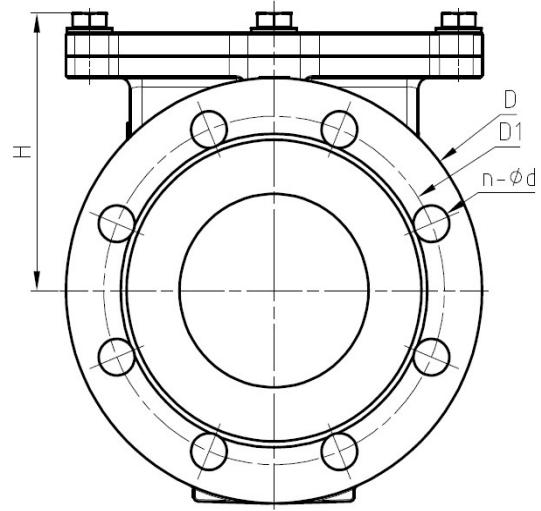
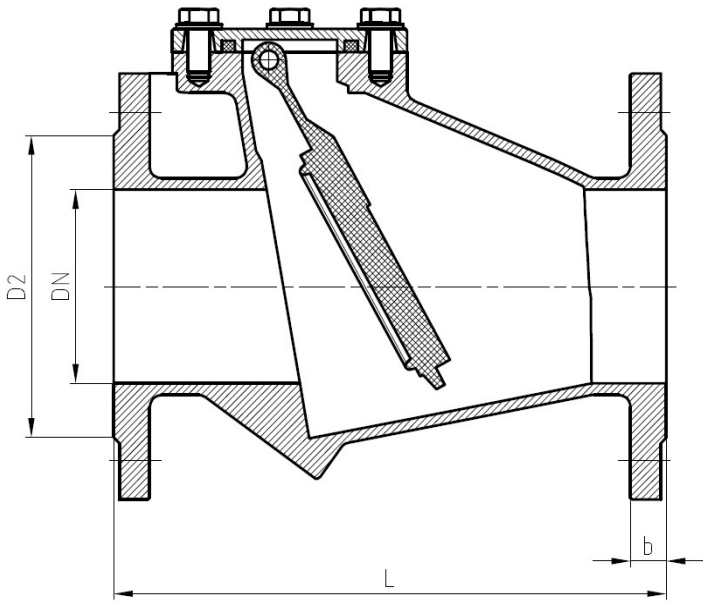


| Pos. | Q-ty | Description | Material | Equivalences | | | Epoxy coating |
|------|------|-------------|---------------------------|--------------|---------------|----------------|---------------|
| | | | | DIN | ASTM | BS | |
| 1 | 1 | Body | Ductile iron EN-GJS-500-7 | GGG50 | A536 65-45-12 | 1563 EN-JS1050 | RAL5005,250µm |
| 2 | 1 | Plate | Ductile iron EN-GJS-500-7 | GGG50 | A536 65-45-12 | 1563 EN-JS1050 | RAL5005,250µm |
| 3 | 1 | Gasket | NBR | | | | |
| 4 | 1 | Bonnet | Ductile iron EN-GJS-500-7 | GGG50 | A536 65-45-12 | 1563 EN-JS1050 | RAL5005,250µm |
| 5 | 1 | Screw | Stainless steel 304/A2 | X5CrNi 18 10 | A182 AISI 304 | 1449-2-304 S15 | |
| 6 | 1 | Washer | Stainless steel 304/A2 | X5CrNi 18 10 | A182 AISI 304 | 1449-2-304 S15 | |



WELLVALVE

**SCV90-H44X90
FLANGED SWING CHECK VALVE**



| Structure | | | | | | | | | | | |
|-----------|------|------|------|------|------|---------|---------|-------|-------|-----|--------|
| DN | L | D | | D1 | | D2 | b | n-Ød | | H | Weight |
| mm | mm | PN10 | PN16 | PN10 | PN16 | PN10/16 | PN10/16 | PN10 | PN16 | mm | (Kg) |
| 40 | 180 | 150 | | 110 | | 84 | 19 | 4-19 | | 115 | 6.8 |
| 50 | 200 | 165 | | 125 | | 99 | 19 | 4-19 | | 120 | 7.3 |
| 65 | 240 | 185 | | 145 | | 118 | 19 | 8-19 | | 140 | 10.4 |
| 80 | 260 | 200 | | 160 | | 132 | 19 | 8-19 | | 150 | 12.9 |
| 100 | 300 | 220 | | 180 | | 156 | 19 | 8-19 | | 185 | 16.6 |
| 125 | 350 | 250 | | 210 | | 184 | 19 | 8-19 | | 210 | 32 |
| 150 | 400 | 285 | | 240 | | 211 | 19 | 8-23 | | 260 | 41.5 |
| 200 | 500 | 340 | | 295 | | 266 | 20 | 8-23 | 12-23 | 350 | 70.8 |
| 250 | 600 | 405 | | 350 | 355 | 319 | 22 | 12-23 | 12-28 | 430 | 117.4 |
| 300 | 700 | 410 | | 400 | 410 | 370 | 24 | 12-23 | 12-28 | 500 | 168.8 |
| 350 | 800 | 460 | 470 | 460 | 470 | 429 | 26 | 16-23 | 16-28 | 650 | 213 |
| 400 | 900 | 515 | 525 | 515 | 525 | 480 | 28 | 16-28 | 16-31 | 730 | 320 |
| 450 | | | | | | | | | | | |
| 500 | 1100 | 620 | 650 | 620 | 650 | 609 | 31 | 20-28 | 20-34 | 850 | 550 |
| 600 | 1300 | 725 | 770 | 725 | 770 | 720 | 36 | 20-31 | 20-37 | 950 | 760 |

WORKING CONDITIONS

Maximum working pressure: 16 bar
 Maximum working temperature : -10°C / +80°C.